

Hampshire

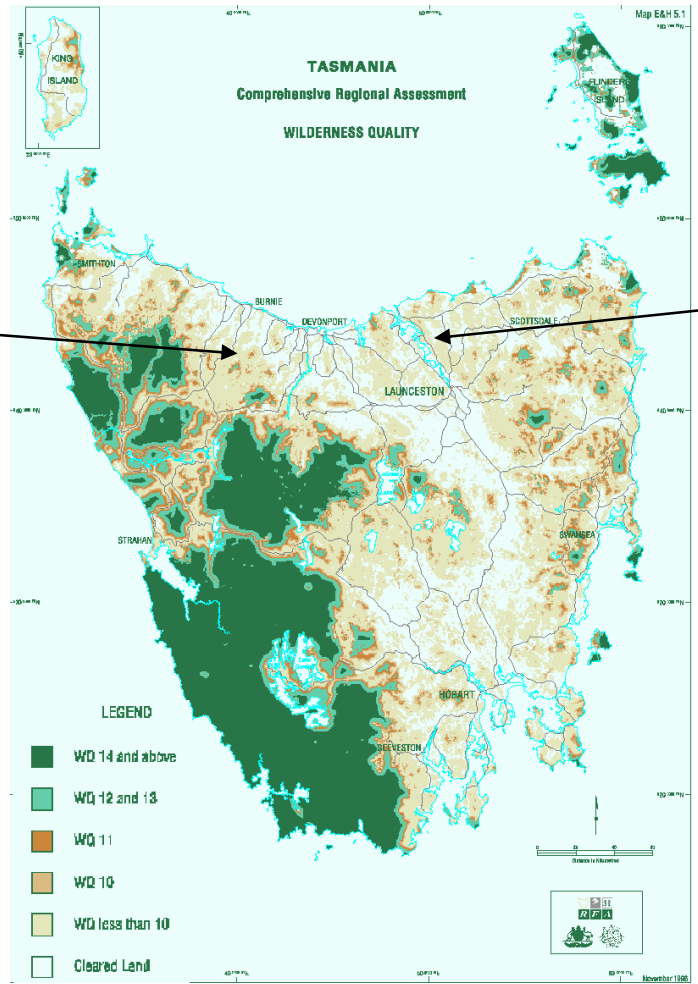
A good site for a pulp mill
but not as good as
Bell Bay

Hampshire might provide an ideal second location for a pulp mill but the feasibility study and logic show that Bell Bay is a better site. The Bell Bay site was chosen through a site selection process that considered environmental, social, economic and strategic planning factors.

The two sites considered were the Bell Bay and Hampshire locations, both of which are adjacent to existing woodchip facilities owned by Gunns. The co-location of the mill with existing woodchip facilities was considered important to reduce cost, and minimize double-handling and transport impacts.

The outcome of the site selection assessment was that the Bell Bay location was preferred on economic, planning and social considerations, and was equally preferred with the Hampshire site on environmental considerations. In particular, the availability of wharf facilities at Bell Bay, and the increase in log truck traffic which would be necessary to utilise the Hampshire site, weighed in favour of the Bell Bay location.

Hampshire

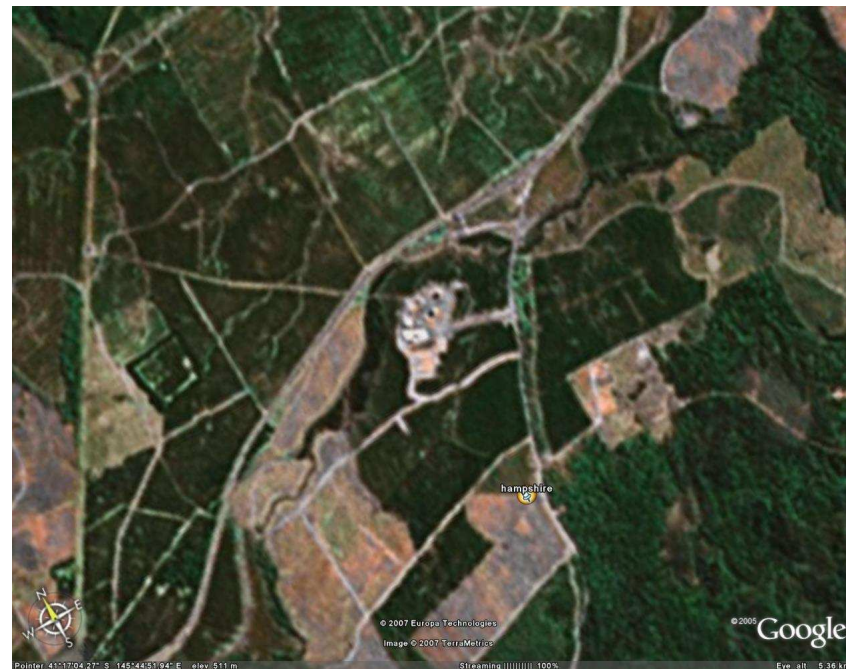


Tamar

**IMPACT ON
HIGH
QUALITY
WILDERNESS**

Hampshire

The site is located between Dudfield Road and Mount Road, sw of Hampshire. It is plantation forest on a gently undulating plateau above the Loud water River. The site would be about 100ha. A Pipeline would be constructed to Burnie to discharge treated effluent into Bass Strait. Water would have been pumped from an enlarged existing nearby dam



Planning

Hampshire

The area is in the City of Burnie and covered by its Planning Scheme, it is zoned Rural – Forestry

It is adjacent to an existing wood chip mill

The Bell Bay Precinct zoned Heavy Industrial is already the most significant industrial estate in Tasmania, with a large number of major operations within its borders including the:

- Rio Tinto Aluminium smelter; TEMCO ferro-alloy processing plant; Port of Launceston;
- Export woodchip facilities from Artec and TasFibre; Eckagranules aluminium powder plant;
- George Town Seafood processing facility; SVP Industries plant; Bell Bay Power station, FEA sawmill and Gunns woodchip mills.

Until recently it was also the site of the Starwood MDF plant,



In comparing the two sites

the Hampshire site has an effluent pipeline through city of Burnie and ocean outfall off City's beaches.
(Tamar discharges at the remote 5 Mile Bluff away from population)

Gas and Electricity 27 km away
(Tamar power lines on site, Gas immediately available)

Long way from port, through towns. Need storage in Burnie about 27 km away
(Tamar Port and Storage Facilities on site no transport of Chemicals or finished product through city)

Infrastructure & Water Supply



The Burnie pulp and paper mill water supply was from Talbot's Lagoon and Companion Dam. Most of this is now surplus as the pulp mill is closed and pulp is imported from Indonesia.

These have a storage capacity of 6,500 ML, an additional storage of 1,500 ML would be required.

This would have been achieved by raising the Companion Dam wall, building a new pumping station.

Some flow would still be required into the Emu River to provide for the Burnie paper mill and environmental flows.

EPBC Act Issues

National Environmental Criteria	Likely to be Significant Impact
Threatened Species and Communities	No identified communities Suitable habitat for 31 threatened species, including Wedge Tailed Eagle, Spotted tailed Quoll and Thylacine recorded within 5km of site
Listed Migratory Species	Suitable habitat for 26 Migratory species, 5 migratory species recorded at ocean outfall
Wetlands of International Importance	No Ramsar Wetlands
The Commonwealth marine environment	The discharge from the ocean outfall up to 4km into Bass Strait may impact on C'wealth waters 5.5 km from coast
World Heritage properties	No world heritage in vicinity, but in line of sight from parts of Cradle Mountain, and adjacent to Tarkine, to be nominated as WH property
National Heritage places Commonwealth Land	No Heritage places in vicinity, but three conservation areas Burnie Fern Glade, Emu River Forest reserve and Savage River NP Some defence land near site and pipeline route
Nuclear actions	No nuclear action proposed

LOCATION OF NATIONAL PARKS

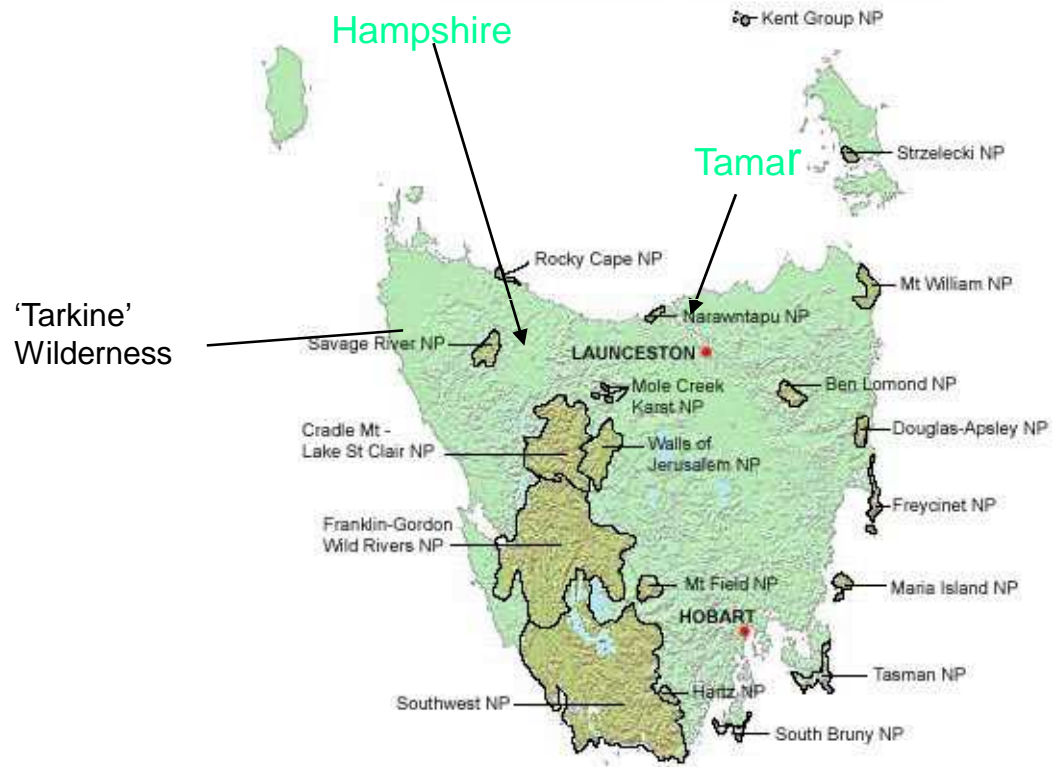
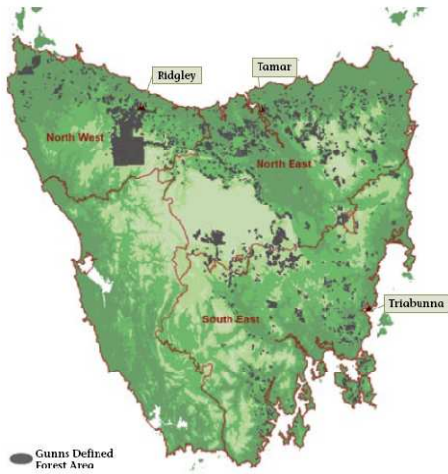


Figure 2 - Gunns Forest Management Area in Tasmania



Wood Supply

The Hampshire mill will require more wood to be transported to the NW from other regions of the State

