

## Emission report

You are here: [NPI Home](#) > [Database Search](#)

25 August 2007 08:30

# Polychlorinated dioxins and furans Summary - All sources: Postcode 7253

The National Pollutant Inventory (NPI) has pollutant emissions from larger industrial facilities, and diffuse data for pollutant emissions from small facilities, transport (e.g. motor vehicles) and non-industrial sources (e.g. barbeques).



This report includes data for industrial facilities and diffuse sources (if available for this region) for the 2005 - 2006 NPI reporting year.

- [This report for industry facility data only](#)
- [This report for diffuse data only \(if available\)](#)

How we live impacts pollutant emissions. There are actions we can all take to decrease pollution.

- [What you can do to decrease pollution](#)
- [More information about using and interpreting NPI data](#)
- [The disclaimer has further information about the use of NPI data.](#)

## This report includes:

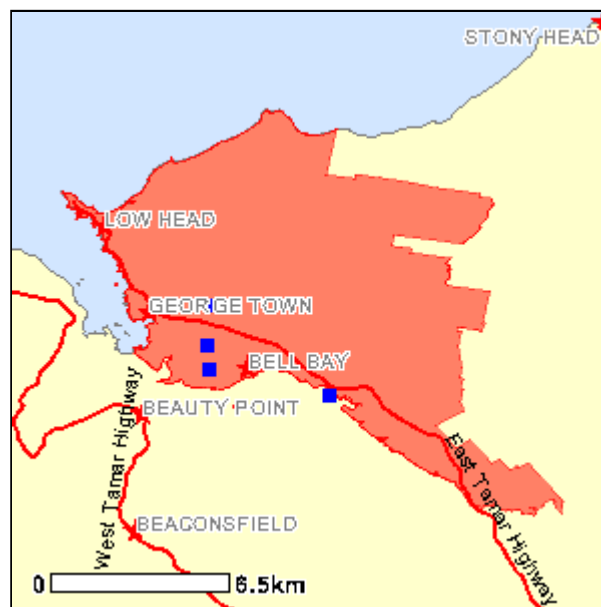
- [Summary of all sources of Polychlorinated dioxins and furans](#) for: **Postcode 7253**
- [Emissions to air, land and water by source](#)
- [Explanation of data](#)

See also other reports on:

- [Details of sources - including individual facility details and airshed maps](#)
- [Profile of Polychlorinated dioxins and furans](#) - background information on major sources and effects

## Source summary

- 5 sources were found.
- 4 facilities from 4 industry sources reported Polychlorinated dioxins and furans emissions greater than zero to the NPI.
- Diffuse data was collected for one source.

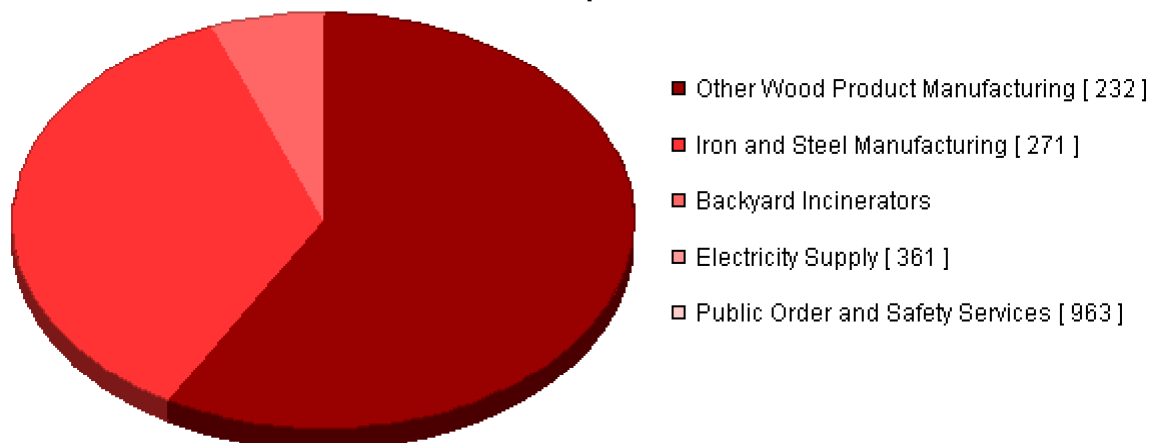


Map of Postcode 7253

NPI facilities are shown as ■

The pie chart shows the relative contribution of the top sources towards the total emissions of Polychlorinated dioxins and furans in Postcode 7253.

### Indicative Top Sources



## Emissions of Polychlorinated dioxins and furans by Source

The table shows all the sources which emit Polychlorinated dioxins and furans in Postcode 7253. The total is the sum of the emissions to Air, Land, and Water. All emission amounts have been rounded to two significant figures. Note that totals may differ from the sum of the individual amounts, as these are also rounded after calculation.

Source ( Diffuse Source * or ANZSIC Group )	Emission (kg/year)			
	Total Sort	Air Sort	Land Sort	Water Sort
<a href="#">Other Wood Product Manufacturing [ 232 ]</a>	0.0013	0.0013		
<a href="#">Iron and Steel Manufacturing [ 271 ]</a>	0.00080	0.00080		
<a href="#">Backyard Incinerators *</a>	0.00013	0.00013		
<a href="#">Electricity Supply [ 361 ]</a>	0.0000024	0.0000024		
<a href="#">Public Order and Safety Services [ 963 ]</a>	0.00000062		0.00000062	
<b>Total Emissions (kg/year)</b>	0.0022	0.0022	0.00000062	

## Explanation of data and calculations

The NPI reports on emissions of chemical substances and where and from what sources they are generated. The ultimate fate of these substances and therefore exposure to humans and the environment as pollution cannot be determined from the NPI. Numerous factors such as height of emission (high stacks versus ground level vehicle exhausts), nature of receiving environment, chemical reactivity of the substance and prevailing meteorological conditions determine whether an emission is felt as ground level pollution. Since NPI does not attempt to collect these parameters, the data can only reflect pollutant generation at source.

The NPI holds emission data reported by industrial facilities, and diffuse data collected by participating jurisdictions. Industrial facilities are required to report emissions to the NPI if they use more than a certain amount of one or more substances on the NPI reporting list, or consume more than a specified amount of fuel or electric power, or emit more than a certain amount of nitrogen or phosphorus to water. Diffuse data sources include smaller facilities that are not required to report, and mobile and non-industrial sources such as transport, domestic activities and for water catchments and land use type (see [further details](#) on NPI data).

The techniques used to estimate emissions in the NPI have been variously approved by Commonwealth, State and Territory environment agencies but it is important to note that the accuracy of these estimates is likely to vary according to the technique used. For the diffuse data in particular, comparative analysis of the data may be misleading, because jurisdictions may have used different approved estimation techniques. Industrial facilities estimate emissions using a technique described in an appropriate NPI handbook, or else otherwise approved.

The [listed substances](#) span a wide range of toxicities. A small number may not necessarily imply an

insignificant emission; for example, a small emission of a highly toxic substance may be of more concern than a larger emission of a substance of relatively lower toxicity. All emission amounts reported here have been rounded to two significant figures - totals may differ from the sum of the individual amounts on these reports because of this rounding. Some minor discrepancies may also occur with catchment and airshed data, particularly when queried at a fine spatial resolution such as a postcode. This is because these data are collected at varying spatial resolutions.

[Department of the Environment and Water Resources](#)

GPO Box 787 Parkes ACT 2600 Australia

Telephone: +61 (0)2 6274 1111 | [ABN](#)

© Commonwealth of Australia