



EFFLUENT DISPERSAL & Content

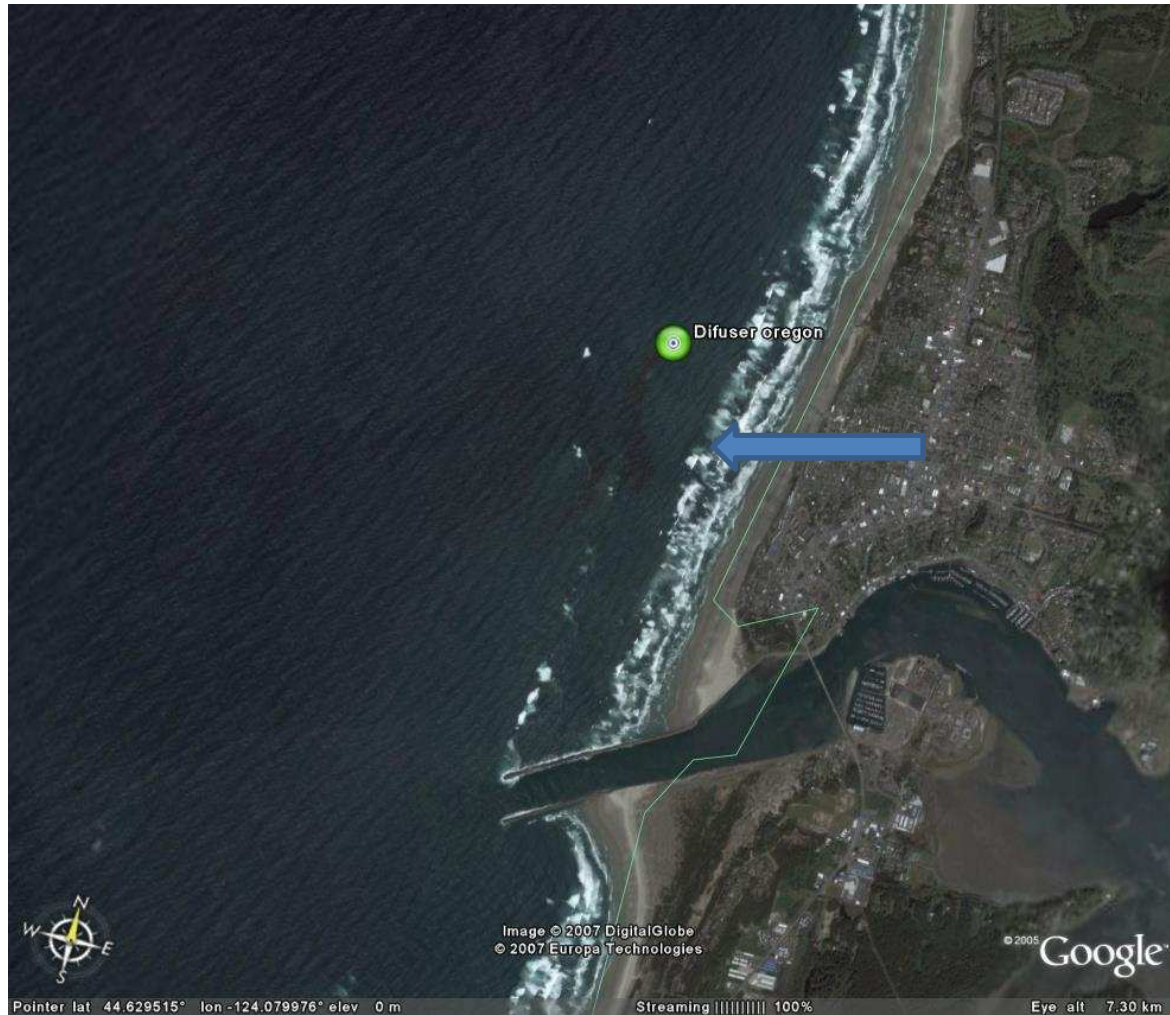
Dr Stuart Godfrey, an oceanographer made a submission to the Commonwealth at the request of the Surfidors.org
The DEW consultants would not comment on the accuracy of a photo he used but did agree with his conclusions!

Surf rider's claim

Nye Beach, Newport, Oregon USA



The red line is meant to be the outfall from a pulp mill east of Newport, the triangle the Zone of Initial Dilution, the pipeline is 4000 feet (1.2 km)
The Oregon Department of Environmental quality fully investigated & dismissed claims of pollution, yet Dr Godfrey claims this shows effluent heading towards the beach.



Google Earth and the City of Newport's sewerage outfall (blue arrow) tell a different story. Is that people's poo floating out to sea? Despite the beach closing a couple of times this summer, Newport still held its Annual wooden boat festival and Wine and Fish expo, as the river is home to oyster farms as well as the pulp mill.

Location of Pulp Mill outfall
**National Pollutant Discharge Elimination System PERMIT
EVALUATION AND FACT SHEET GP Pulp Mill 2006**
Oregon Department of Environmental Quality

**Location of Sewerage Outfall: Source Oregon Department of Environmental Quality
Water Quality Wastewater Permits Database -
Facility Details**
Active Permits for NEWPORT, CITY OF - WQ File Number: 111142



On the Beach near the outfalls

Source <http://www.surfrider.org/blogger/2006/10/oregon-pulp-mill-surfrider-petition.asp>

Official Inquiry Finding

“DEQ officials said they had no evidence the discharge endangers human health or marine life,

and determined that while winds might push the effluent toward shore,

“the dilution will be so great that pollutants will be well below water quality criteria prior to reaching the surf zone.”

DEQ found **no risk** to people swimming at Nye Beach.”

Source <http://www.newportnewstimes.com/articles/2006/10/18/news/news05.txt>

Dr Godfrey's Claim

based on the Oregon photo

- Ribbons of polluted water with concentrations not much less than those near the outflow (like that seen in Figure 1 below, but now heading offshore) will almost certainly reach nearby Commonwealth waters, especially on sunny days with light offshore winds.
- Ribbons of water, not as strongly polluted as those just referred to but nevertheless still strong, may under the same conditions stretch across the Tamar, possibly harming commercial species found in Commonwealth waters. They may also harm endangered species, another Commonwealth responsibility